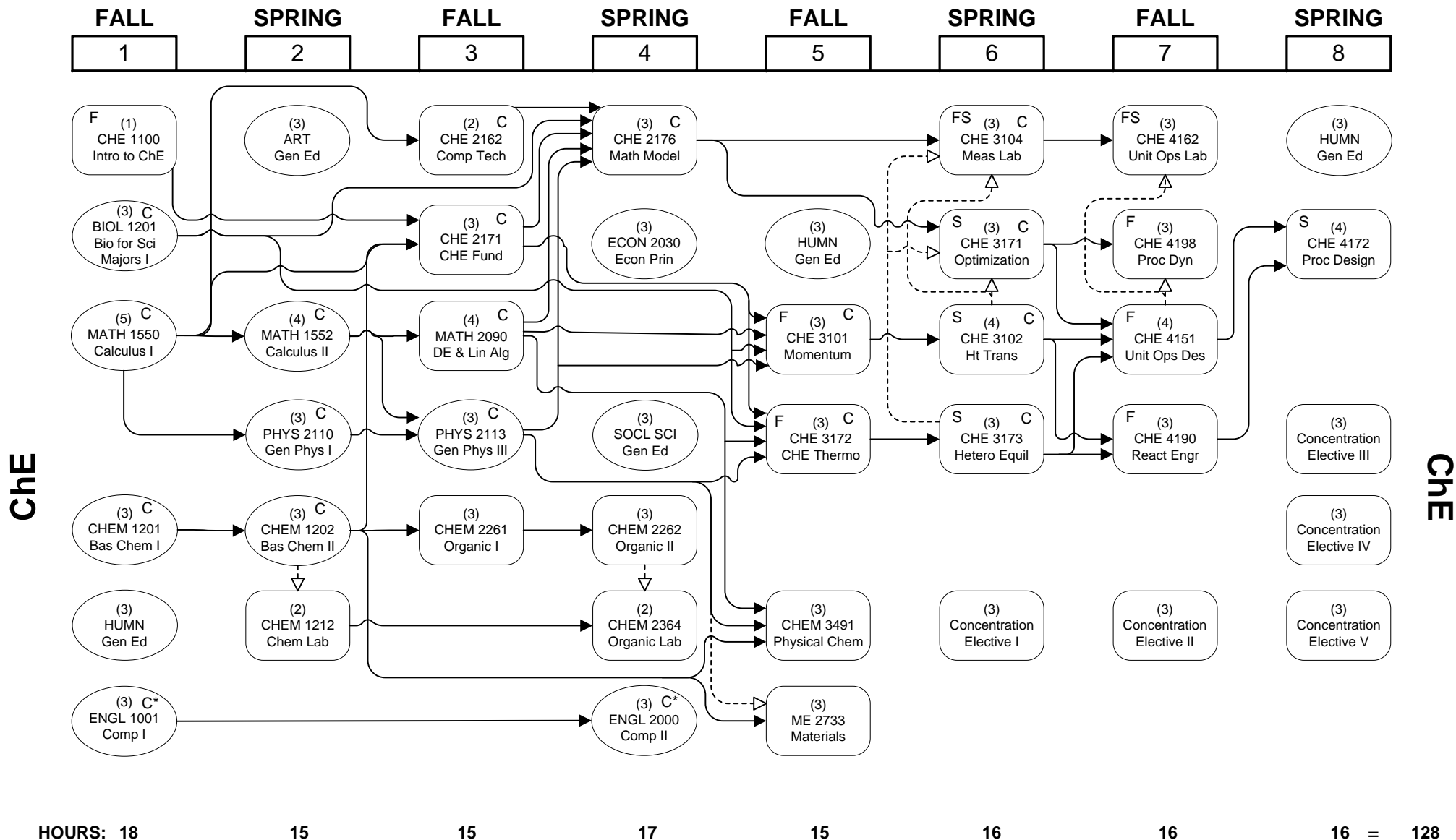


CHEMICAL ENGINEERING



<p>—————▶ Credit required</p> <p>-----▶ Credit or registration required</p> <p>110 ChE Bldg Chemical Engineering Office</p> <p>General Education - See 2016-2017 General Catalog</p>	<h2 style="text-align: center;">FLOWCHART LEGEND</h2> <p>C* Grade of "C" or better required in all English courses</p> <p>C Grade of "C" or better in these courses is required before enrolling in any subsequent courses that cite them as a prerequisite</p> <p>110 Chem Engr Bldg Chemical Engineering Office</p>	<p>FS Course taught both fall and spring semesters</p> <p>F Course taught in fall only</p> <p>S Course taught in spring only</p> <p style="text-align: right;">www.che.lsu.edu</p>
---	--	--