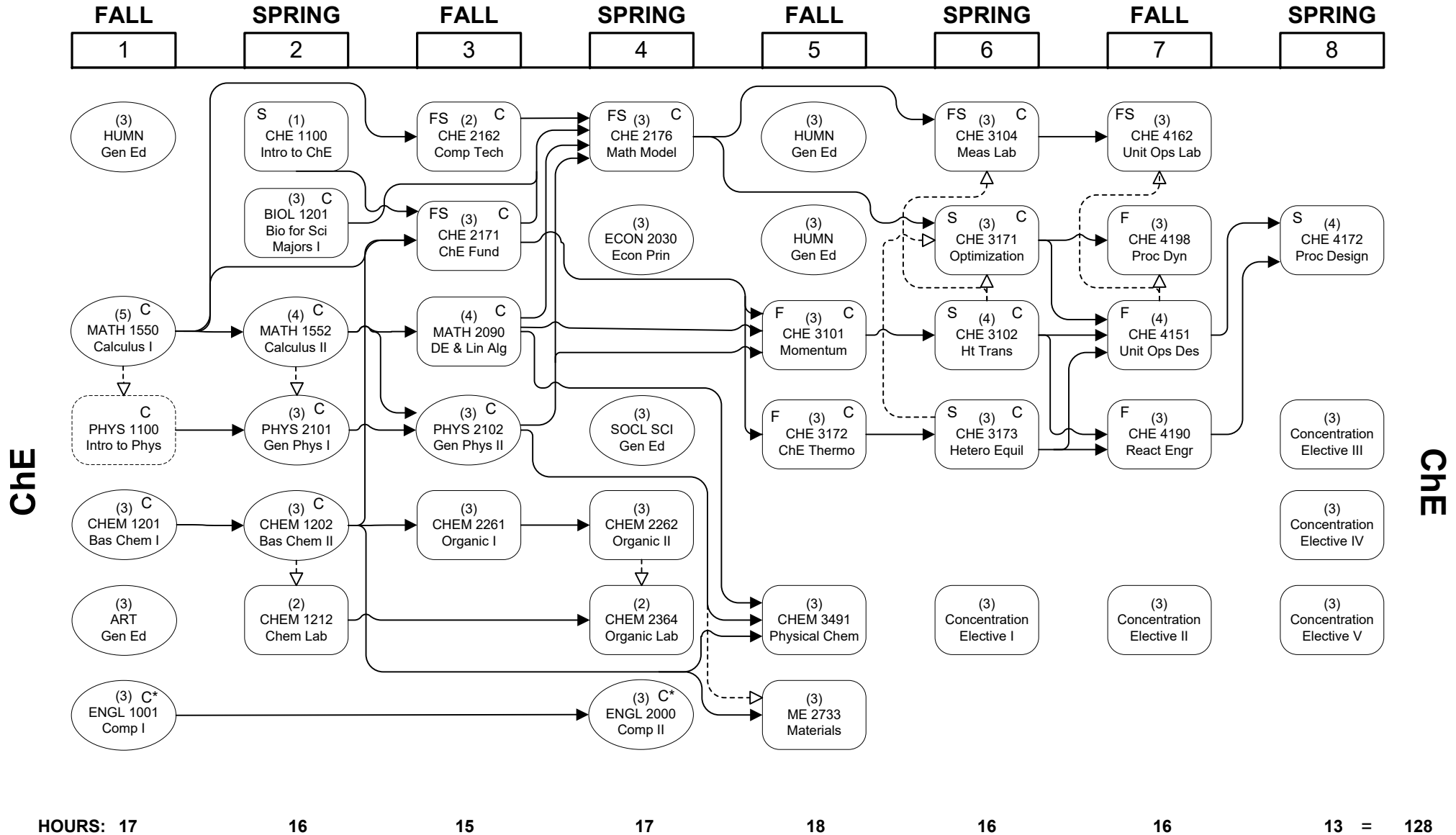


# CHEMICAL ENGINEERING



FLOWCHART LEGEND			
→	Credit required	FS	Course taught both fall and spring semesters
----->	Credit or registration required	F	Course taught in fall only
110 ChE Bldg	Chemical Engineering Office	S	Course taught in spring only
	General Education - See 2013-2014 General Catalog	C*	Grade of "C" or better required in all English courses
		C	<b>Grade of "C" or better in these courses is required before enrolling in any subsequent courses that cite them as a prerequisite</b>
	110 Chem Engr Bldg		Chemical Engineering Office
			<a href="http://www.che.lsu.edu">www.che.lsu.edu</a>